



# THE SAINT-GOBAIN PEG IN BRIEF!



FROM 23 MARCH  
TO 7 APRIL, 2026

## TAKE PART IN THE 2026 OFFER AND BECOME A SAINT-GOBAIN SHAREHOLDER (THROUGH AN EMPLOYEE SHAREHOLDING FUND) UNDER PREFERENTIAL TERMS!

Go to the dedicated website <https://peg.saint-gobain.com> and find all the information about the Saint-Gobain PEG, subscribe to the offer by clicking on the “**Subscribe to the PEG**” button to access the subscription website available from 23 March (10:00 am, Paris time) to 7 April, 2026 (11:59 pm, Paris time).

### 2026 Offer

<b>TERMS</b>	<ul style="list-style-type: none"><li>Acquisition of shares under the PEG through an Employee Shareholding Fund “FCPE”.</li></ul>
<b>SUBSCRIPTION PRICE</b>	<ul style="list-style-type: none"><li>Subscription price including a 20% reduction compared to the reference price.</li></ul>
<b>DIVIDENDS</b>	<ul style="list-style-type: none"><li>Profit from any dividends paid as of 2027 (reinvested in the Employee Shareholding Fund “FCPE”).</li></ul>
<b>PAYMENT OF ADMINISTRATIVE FEES BY SAINT-GOBAIN</b>	<ul style="list-style-type: none"><li>Payment of management fees of the Employee Shareholding Fund FCPE Saint-Gobain PEG Monde.</li><li>Payment of administrative and PEG account keeping fees.</li></ul>
<b>LIMIT OF INVESTMENT</b>	<ul style="list-style-type: none"><li>25% of your gross annual remuneration.</li></ul>
<b>PLEASE NOTE BEFORE INVESTING</b>	<ul style="list-style-type: none"><li>Risk of capital loss.</li></ul>
<b>LOCK-UP PERIOD</b>	<ul style="list-style-type: none"><li><b>5 years.</b></li></ul>

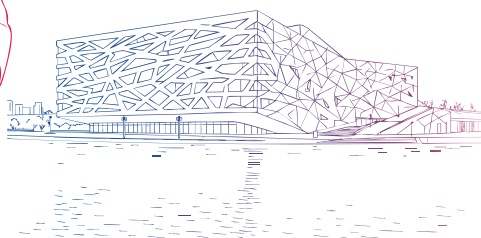


A contribution simulator is available on:  
<https://peg.saint-gobain.com>



# CONTRIBUTION EXAMPLES

You invest...	\$1,000	\$2,000	\$10,000
Extra value received after discount applied (20% discount off price)	\$200	\$400	\$2,000
Value of shares received	\$1,200	\$2,400	\$12,000



## KEY DATES PEG 2026



from 23/02/2026 to 20/03/2026

**Period for setting the reference price**



23/03/2026

**Date for setting the subscription price**



from 23/03/2026 to 07/04/2026

**Subscription period**



19/05/2026

**Capital increase**

The Saint-Gobain Group reserves the option of changing the aforementioned dates or suspending the operation up until the date of setting the subscription price, namely March 23, 2026.

## WHO CAN SUBSCRIBE?

**Employees** of Saint-Gobain Group companies who have been working for the Group for at least 3 months at the end of the subscription period.

## HOW DO I PAY MY SUBSCRIPTION?

You can make your payment through one of two ways:

- A payroll deduction split equally across the remaining pay periods until 31 December 2026
- Through an after-tax salary deductions from your next payroll after the issue of the shares.



A contribution simulator is available on:  
<https://peg.saint-gobain.com>